

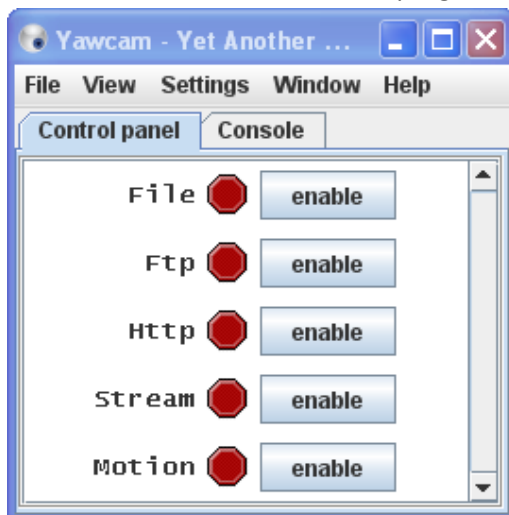
Instructions - How to use Webcam

Written by Abbas Ahmadi, AbAhmadi@ucdavis.edu, April 12, 2014

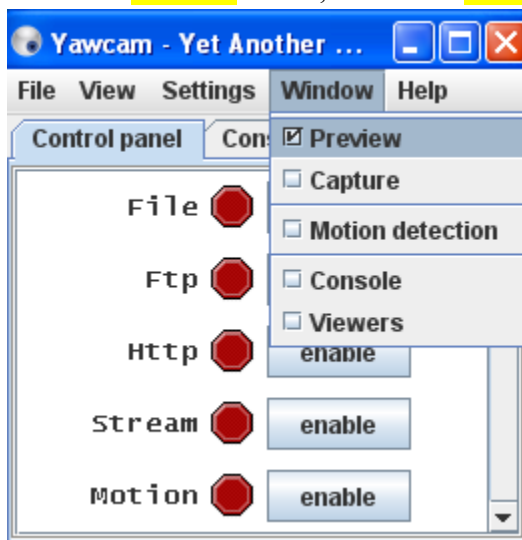
YawCam is a webcam software for windows written in java. It allows the user to watch the webcam in full screen mode. Download Link: <http://www.yawcam.com/index.php>
Help Link: <http://www.yawcam.com/help/help.php>

Instructions

1. To run YawCam click the Start button and then select **All Programs -> YawCam -> YawCam**.
The main screen of the YawCam program appears:

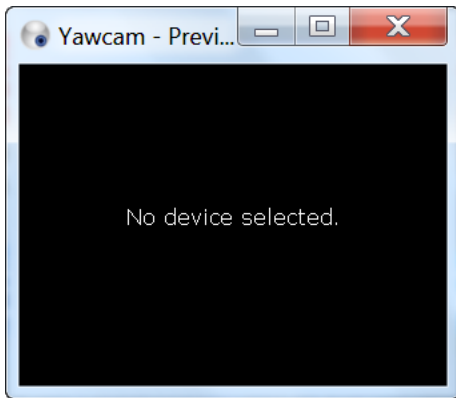


2. From the **Window** menu, select the **Preview** option.

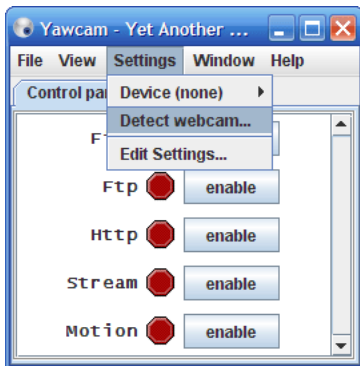


- 3.

- The Preview Windows appears, but shows that no device is selected.



- You can solve this problem by clicking "Settings -> Detect webcam". The system detects the Logitech C920 webcam and shows it in the preview window.



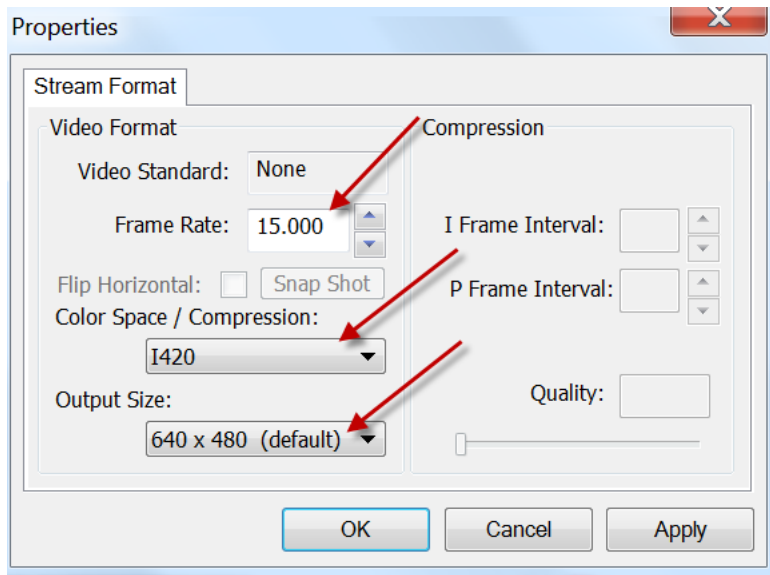
- Resize the preview window or maximize it for a full screen mode



- When you are done, close the preview window and exit the YawCam program.

Usually you can change the Frame Rate and Output Size of the image in the native driver settings for the device. Look at "**Settings -> Device -> Format control**" and see if you can change the fps (Frames Per

Second) settings there. For Logitech C920 webcam the settings should be as follows:



The preview window can put a rather high CPU load on some computers if the fps is high, and the image size large. If this is a problem for you, remember to close the preview window when you not are using it.

YawCam Requirements

- Java Runtime Environment (JRE) 6 or later.
- DirectX 9 or later.
- Windows Media Player 9 or later.
- Windows 2000/XP/Vista/7

The installation file will tell you if you are missing something!